

Equipment and building systems consulting services

When businesses are impacted by disasters involving commercial equipment, EFI Global works as a technical liaison between equipment owners, service vendors and insurers to help restore equipment to pre-loss condition. Our team of expert consultants provides innovative solutions to assist with damage mitigation, minimizing business income loss and preserving all viable options for our clients.

Comprehensive solutions

We offer a wide range of services to help clients with electronic, electrical and mechanical equipment claims including:

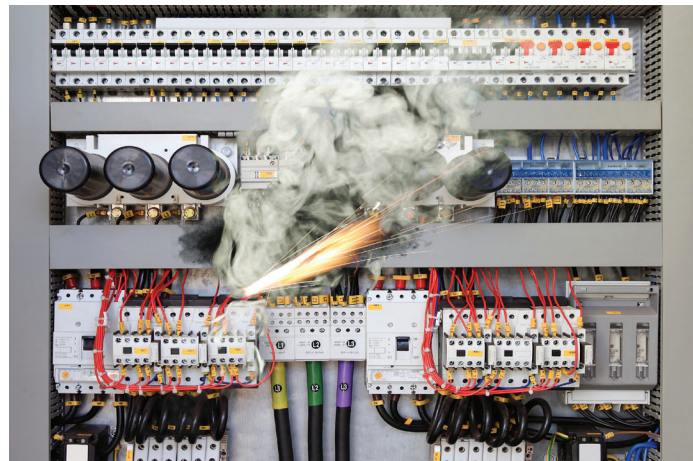
- Determining the cause and extent of damage
- Establishing scope and claim reserve
- Completing analytical contamination sampling
- Determining recovery options and costs
- Working together with manufacturers (OEM)
- Completing cost analysis for like, kind and quality (LKQ) replacement
- Determining actual cash value
- Reinstating warranties and service contracts
- Overseeing all repair work
- Facilitating rigging, shipping and salvage
- Determining liability and subrogation options



Service expertise

Commercial equipment and building systems are susceptible to damage from fire, water, power quality, vandalism, physical impact and other perils. Our experience covers numerous industry sectors and business types:

- Agriculture and farming
- Cloud storage and data centers
- Crypto and blockchain
- Food processing
- Laboratories (all types)
- Manufacturing and industrial
- Marine and cargo
- Medical and dental
- Petrochemical
- Power generation
- Printing
- Pulp and paper
- Renewable energy
- Semiconductor
- Telecommunication
- Transportation



To learn more about our equipment and building systems consulting services, contact:

P. 888.888.2467 **E.** assignaproject@efiglobal.com

To learn more about our integrated and customized solutions, visit [EFIGLOBAL.COM](https://www.efiglobal.com)